

VIDYA BHAWAN BALIKA VIDYAPEETH

STUDY MATERIAL SCIENCE CLASS-VI

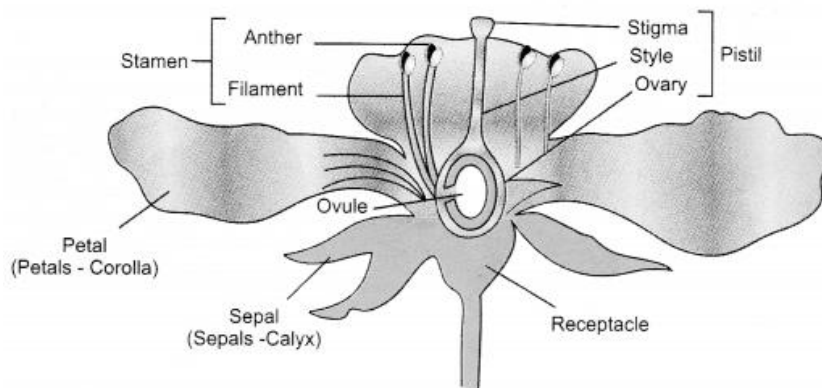
Date : 04-07-2021

Teacher : Poonam Kumari

► Plants :

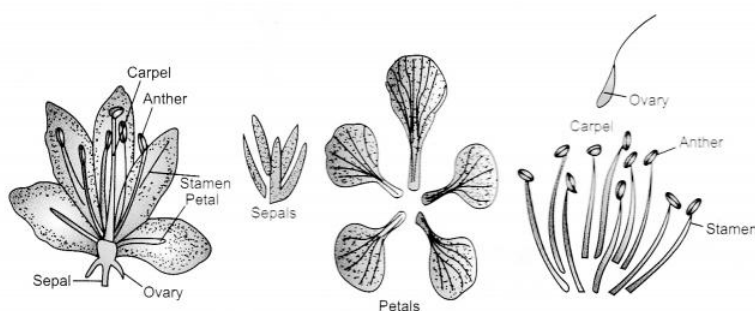
Flower

- It is usually the most attractive part of a plant, also called as modified shoot
- Sepals, petals, stamens and pistils are the main parts of the flower.



Structure of a flower

- Parts of a flower are present in rings or whorls.
- **Pedicel:** The stalk that joins a flower to the plant is called the pedicel.



Parts of a flower

- **Sepals:** It is the outermost whorl of the flower. Often they are small, green leaf like structures. They protect the inner parts of a flower while it is still a bud.
- **Petals:** Inside the sepals there is the whorl of petals. Different flowers have petals of different colours. Some flowers have sweet smelling petals. With its colour and fragrance, the petals attract not only the human beings but also the insects and the birds.
- **Stamens:** These are 4-6 in number and are male reproductive part of a flower. Each stamen is made up of two parts—filament and anther. Anther contains pollen grains.
- **Pistil:** It is the innermost part of a flower. Ovary can be divided into three parts: (a) Stigma, (b) Style and (c) Ovary. Ovary may further be divided into locules. Locules contain ovules.

